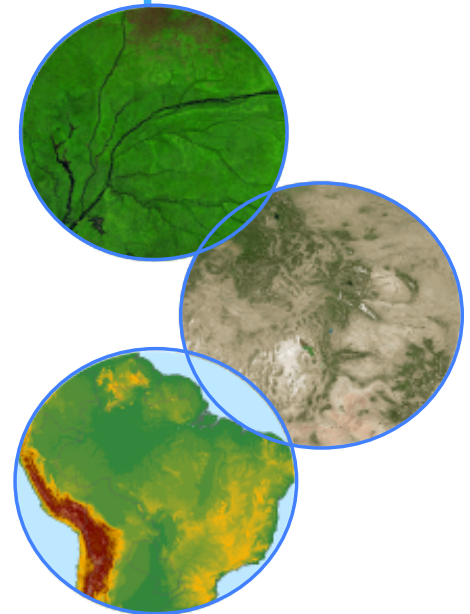




Accessing ORNL DAAC OGC services

Overview:

Accessing ORNL DAAC Open Geospatial Consortium (OGC) services using popular GIS software packages such as ArcMap, uDig, NASA World Wind, and Quantum GIS.



ORNL DAAC:

<http://daac.ornl.gov>

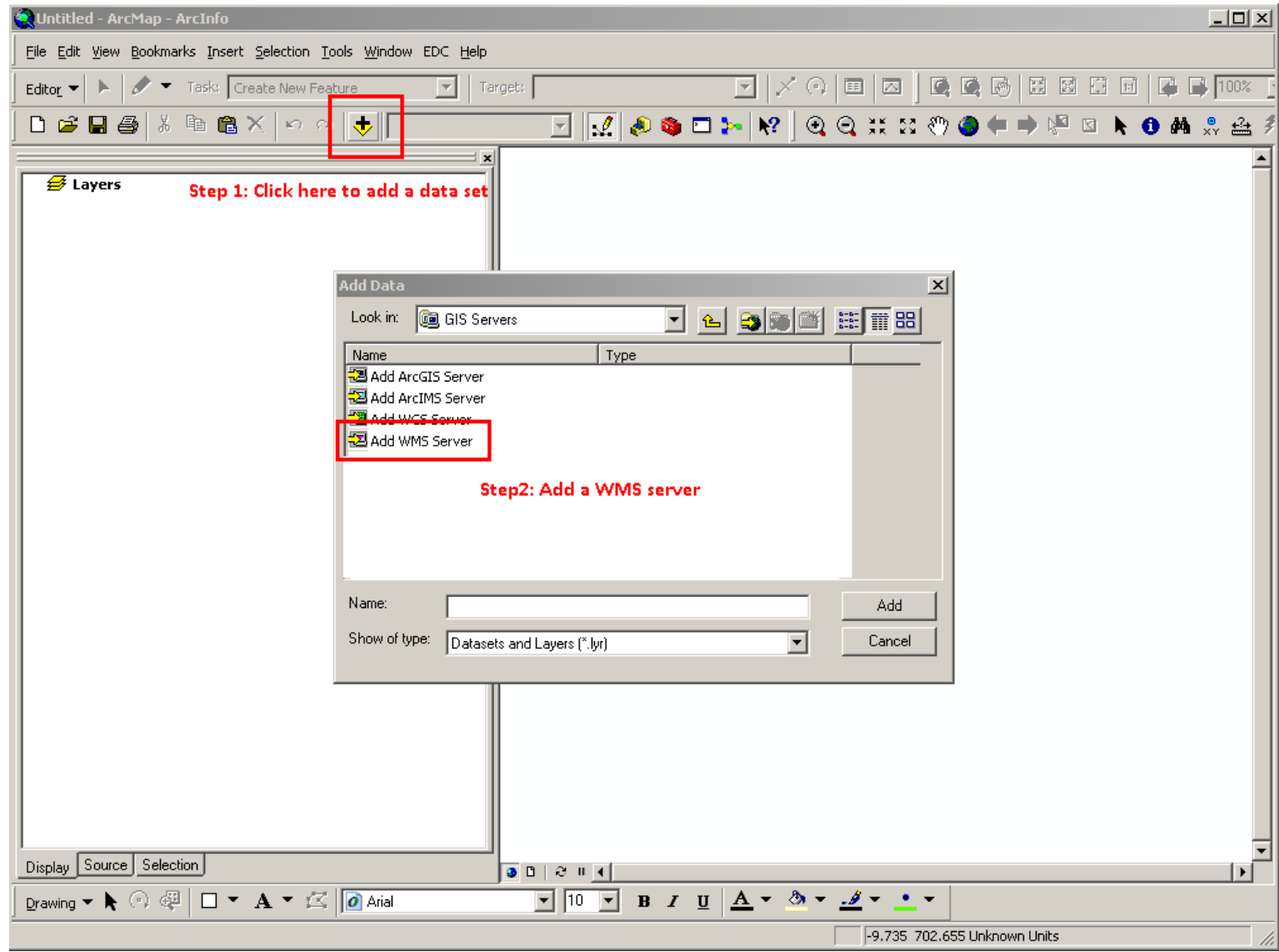
uso@daac.ornl.gov

ORNL DAAC

Accessing ORNL DAAC OGC services using:

- ESRI ArcGIS
 - <http://www.esri.com/>
- uDig (Open Source)
 - <http://udig.refrations.net/>
- NASA World Wind (Open Source)
 - <http://worldwind.arc.nasa.gov/java/>
- Quantum GIS (Open Source)
 - <http://www.qgis.org/>

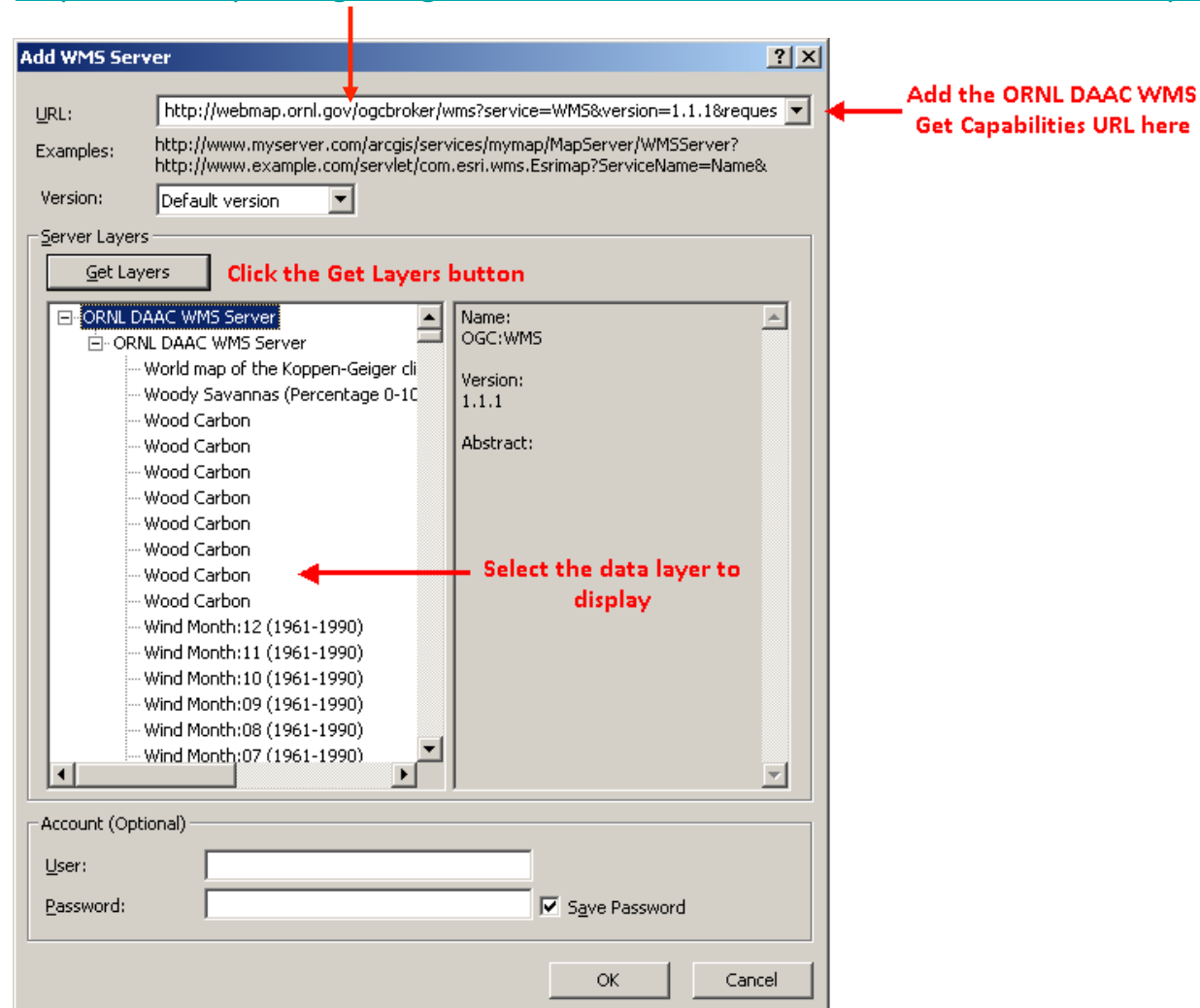
Accessing ORNL DAAC Web Map service (WMS) in ESRI ArcGIS : Step 1/3



Accessing ORNL DAAC Web Map service (WMS) in ESRI ArcGIS : Step 2/3

ORNL DAAC WMS GetCapabilities URL :

<http://webmap.ornl.gov/ogcbroker/wms?service=WMS&version=1.1.1&request=GetCapabilities>



Accessing ORNL DAAC Web Map service (WMS) in ESRI ArcGIS : Step 3/3

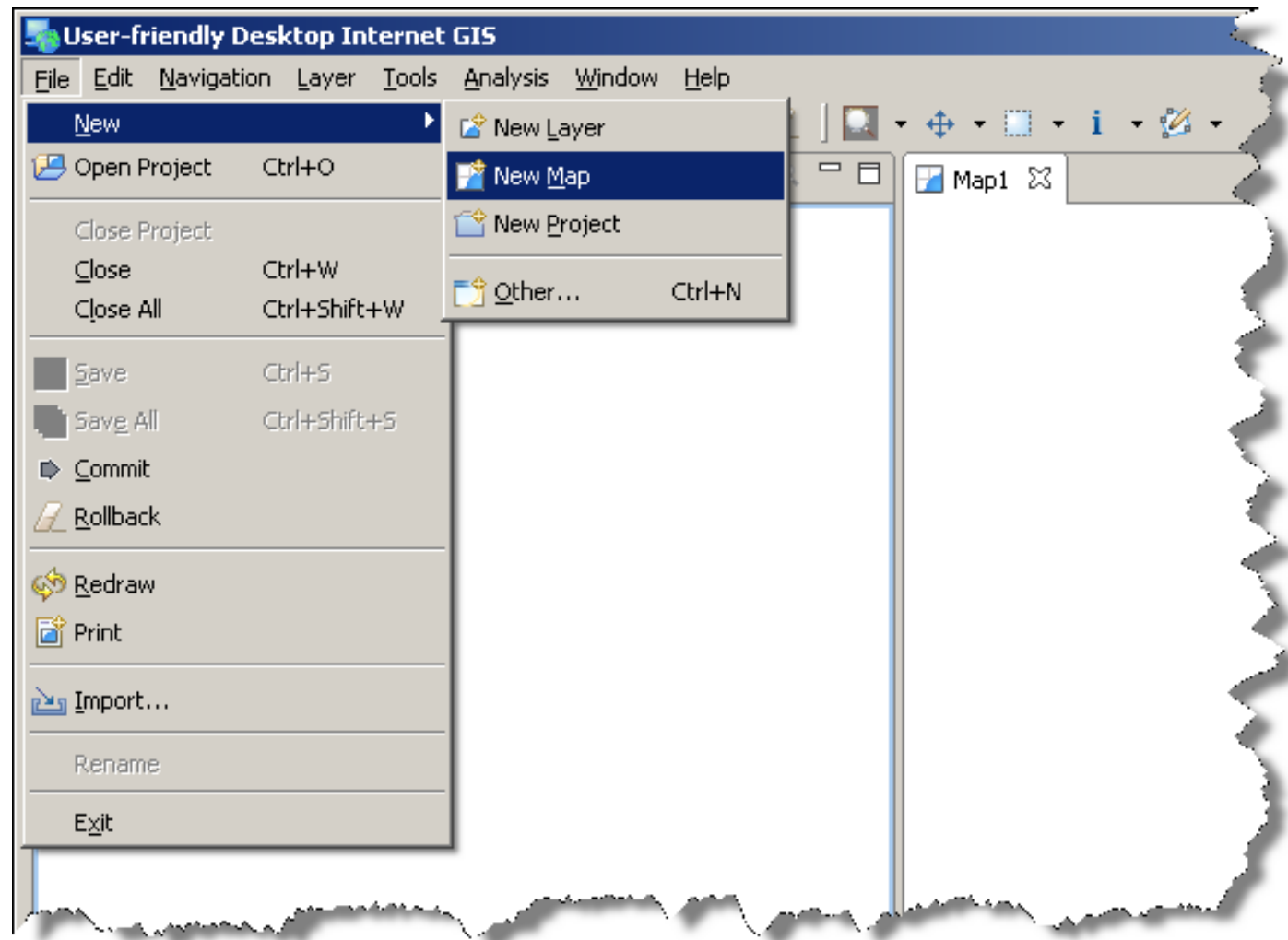
Step 1

Step 2

Name	Type
Heterotrophic Respiration (Rh)	WMS Layer
IGBP Land Cover Class	WMS Layer
Land Cover Type 1 (2001): IGBP global vegetation classification scheme	WMS Layer
Land Cover Type 1 (2002): IGBP global vegetation classification scheme	WMS Layer
Land Cover Type 1 (2003): IGBP global vegetation classification scheme	WMS Layer
Land Cover Type 1 (2004): IGBP global vegetation classification scheme	WMS Layer
Land Cover Type 1 (2005): IGBP global vegetation classification scheme	WMS Layer
Land Cover Type 1 (2006): IGBP global vegetation classification scheme	WMS Layer
Land Cover Type 1 (2007): IGBP global vegetation classification scheme	WMS Layer

Step 3

Accessing ORNL DAAC Web Map service (WMS) in uDig : Step 1/4

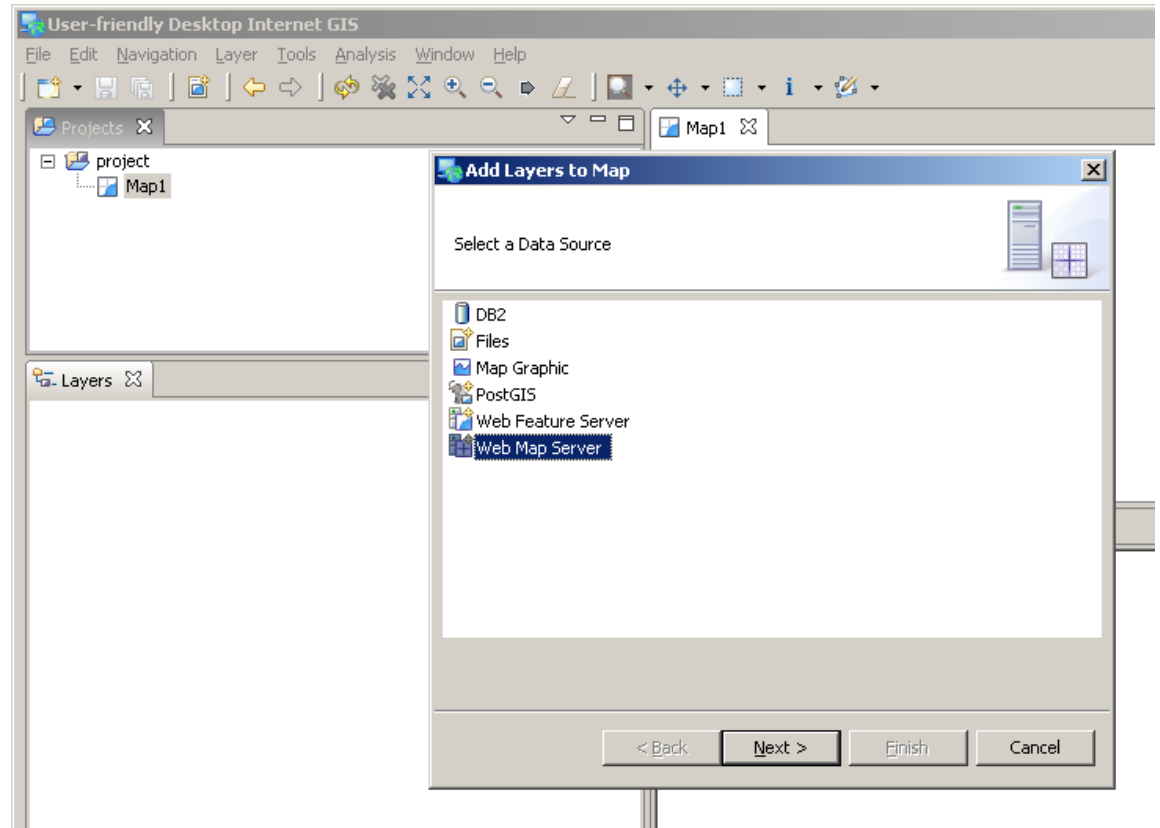


Create a New map

Accessing ORNL DAAC Web Map service (WMS) in uDig : Step 2/4



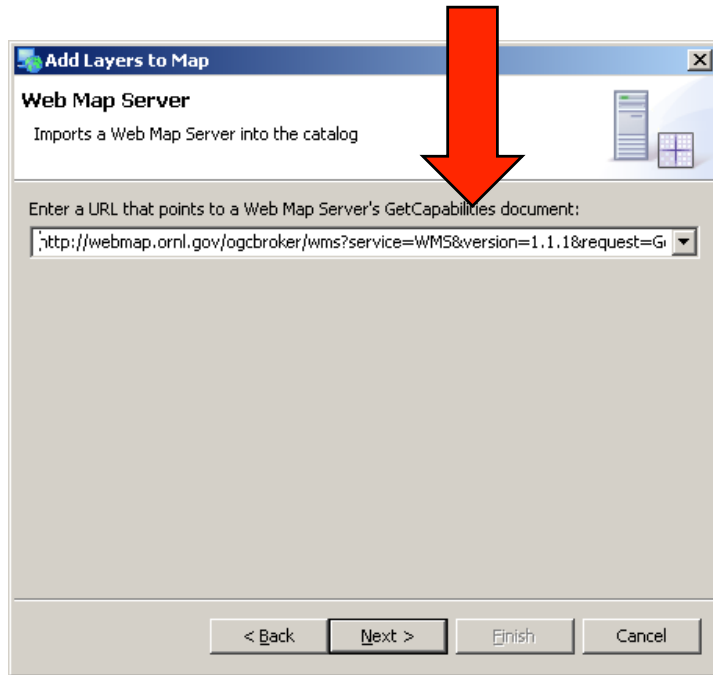
Add a WMS data layer



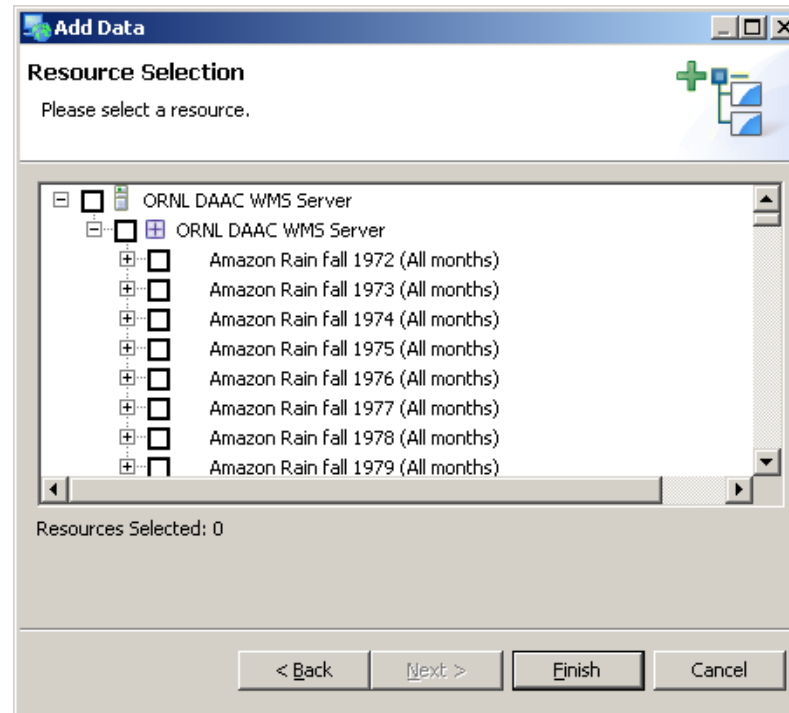
Accessing ORNL DAAC Web Map service (WMS) in uDig : Step 3/4

ORNL DAAC WMS GetCapabilities URL :

<http://webmap.ornl.gov/ogcbroker/wms?service=WMS&version=1.1.1&request=GetCapabilities>

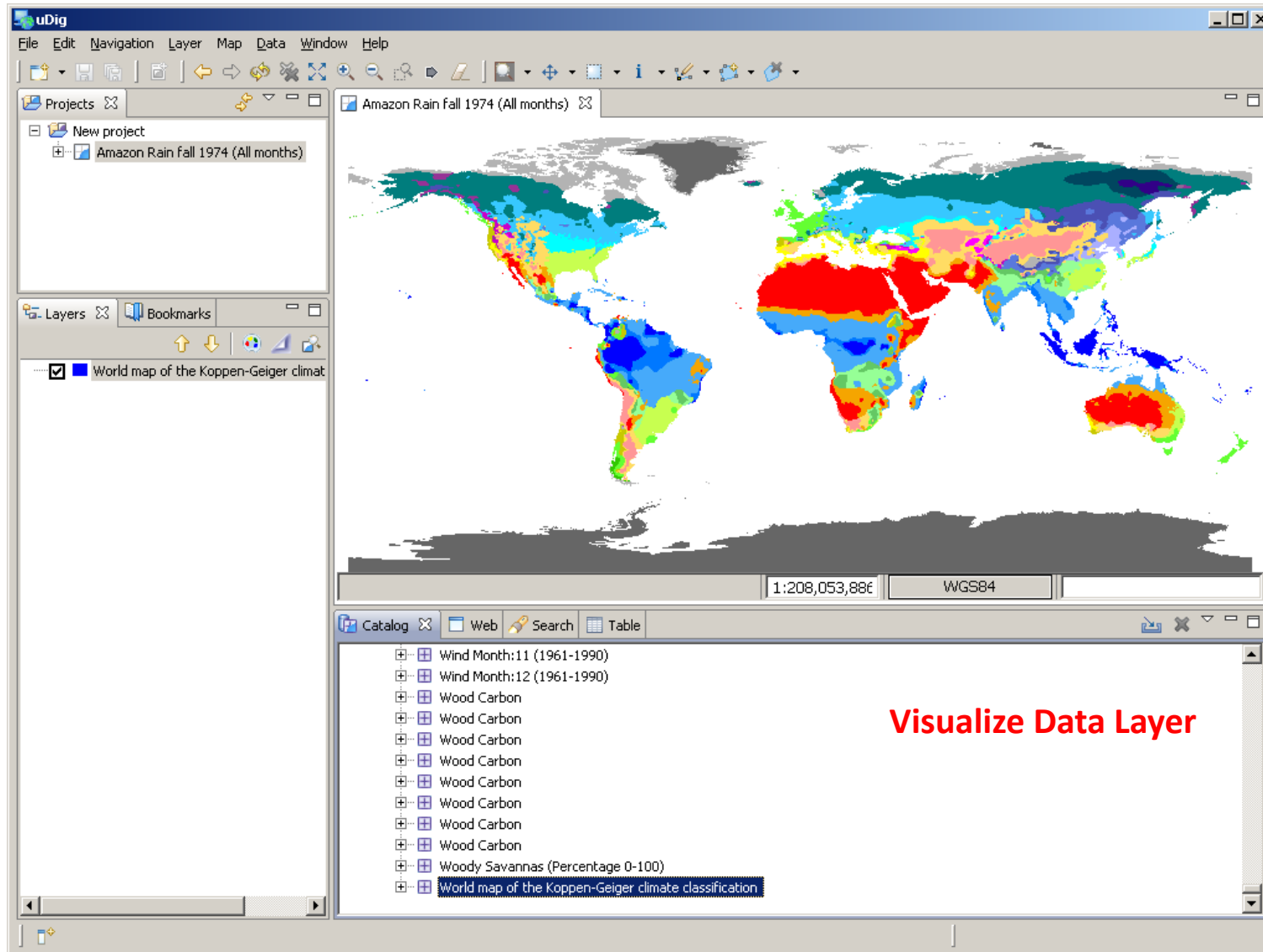


Provide ORNL DAAC WMS Get Capabilities URL

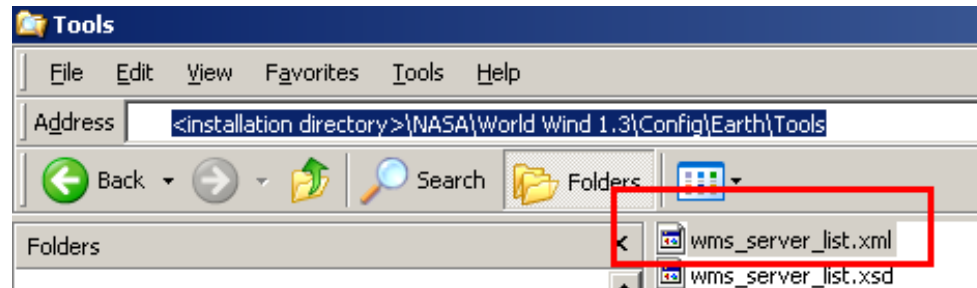


Select data layer

Accessing ORNL DAAC Web Map service (WMS) in uDig : Step 4/4



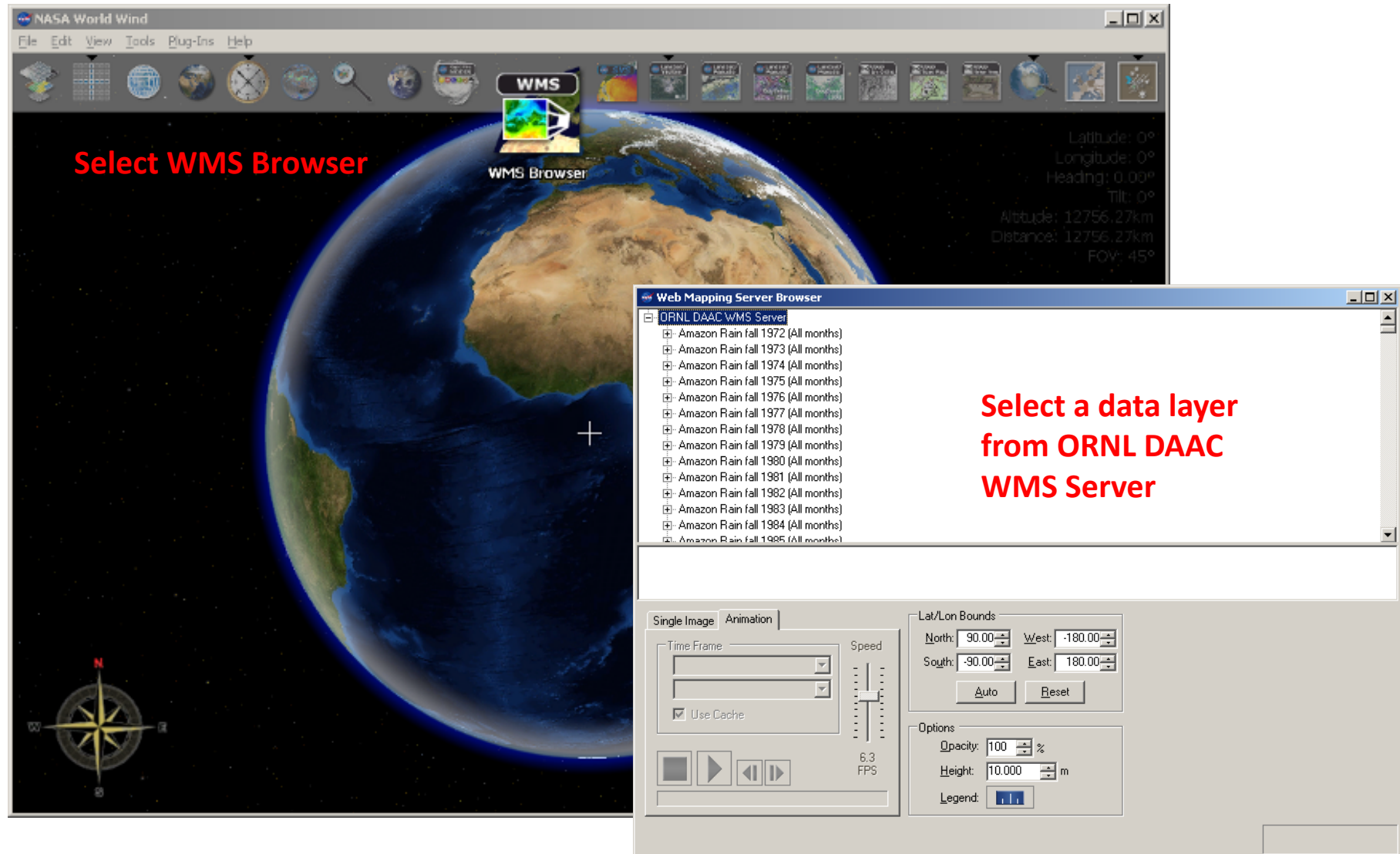
Accessing ORNL DAAC Web Map service (WMS) in World Wind : Step 1/3



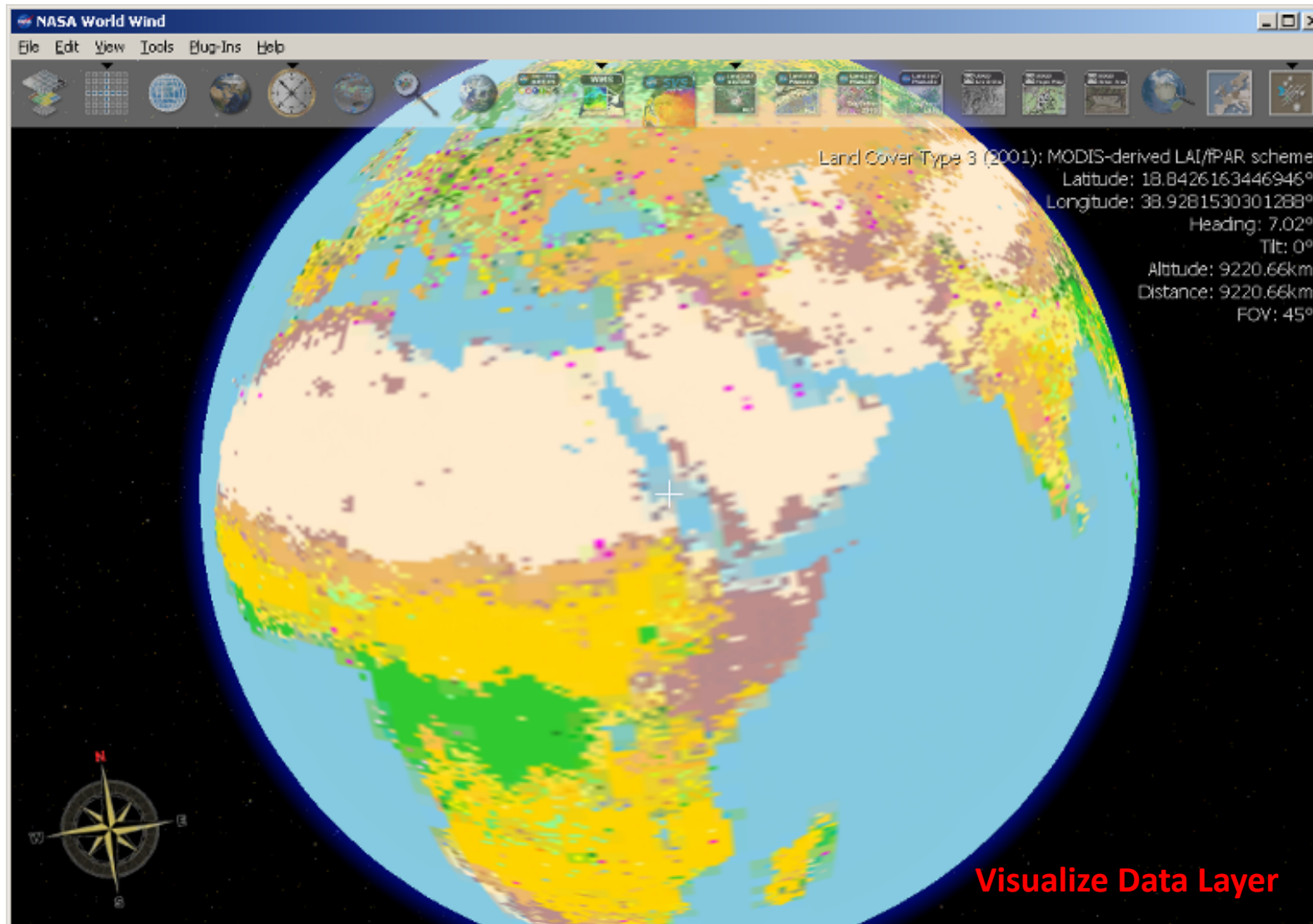
Update WMS server list in NASA World Wind Installation directory

```
1 <?xml version="1.0" encoding="UTF-8"?>
2 <!-- edited with XMLSPY v2004 rel. 4 U (http://www.xmlspy.com) by Patri
3 <WMS_SERVER_LIST xmlns:xsi="http://www.w3.org/2001/XMLSchema-instance"
4   <Server>
5     <Name>Animated Earth</Name>
6     <ServerUrl>http://aes.gsfc.nasa.gov/cgi-bin/wms</ServerUrl>
7     <Version>1.3.0</Version>
8     <Abstract>Animated Earth Visualization Server</Abstract>
9   </Server>
10  <Server>
11    <Name>GLOBE</Name>
12    <ServerUrl>http://viz.globe.gov/viz-bin/wmt.cg</ServerUrl>
13    <Version>1.1.1</Version>
14    <Abstract>GLOBE Visualization Server</Abstract>
15  </Server>
16  <Server>
17    <Name>ORNL DAAC WMS</Name>
18    <ServerUrl>http://webmap.ornl.gov/ogcbroker/wms</ServerUrl>
19    <Version>1.1.1</Version>
20    <Abstract>ORNL DAAC Visualization Server</Abstract>
21  </Server>
22
23 </WMS_SERVER_LIST>
24
```

Accessing ORNL DAAC Web Map service (WMS) in World Wind : Step 2/3



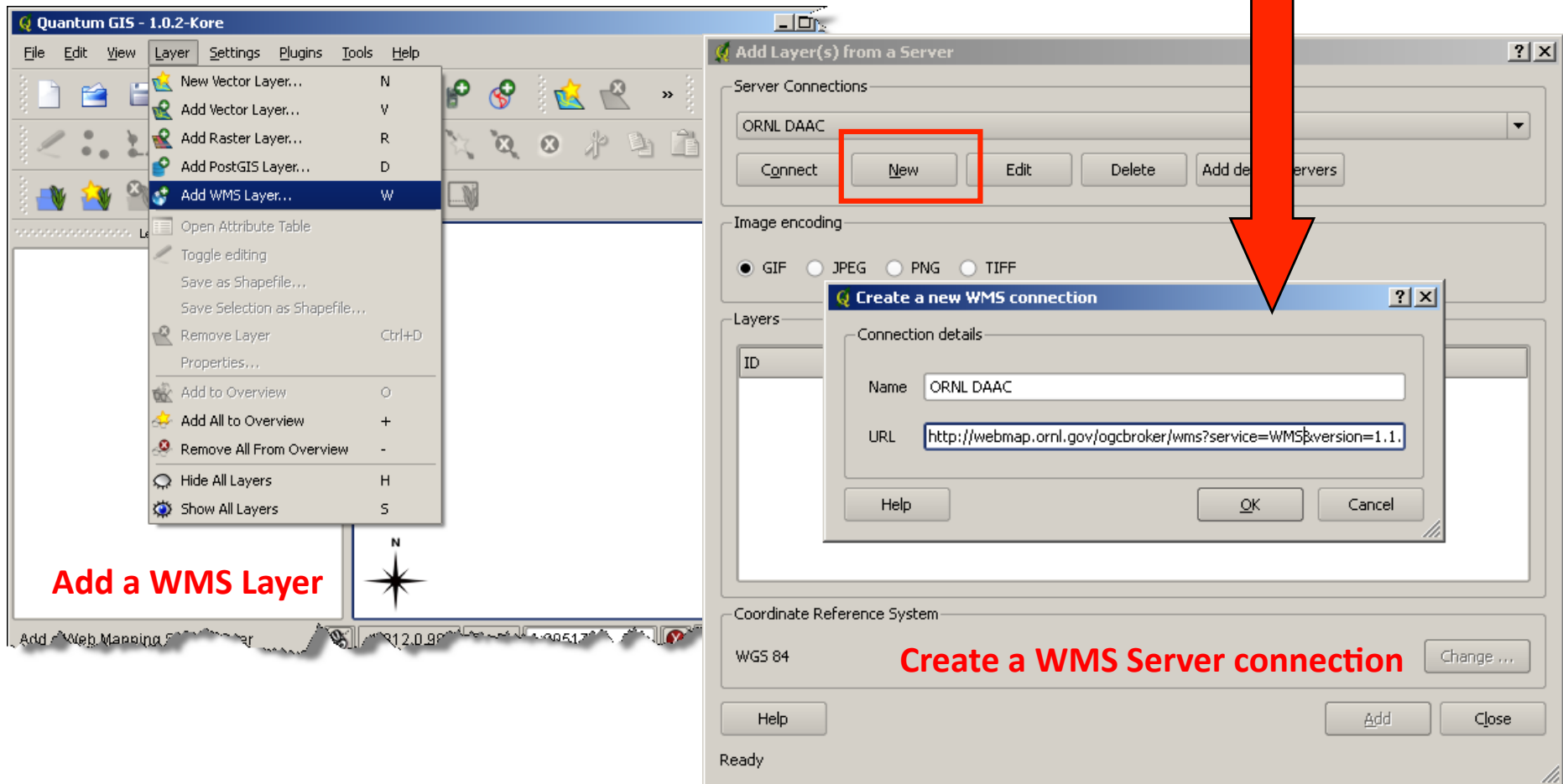
Accessing ORNL DAAC Web Map service (WMS) in World Wind : Step 3/3



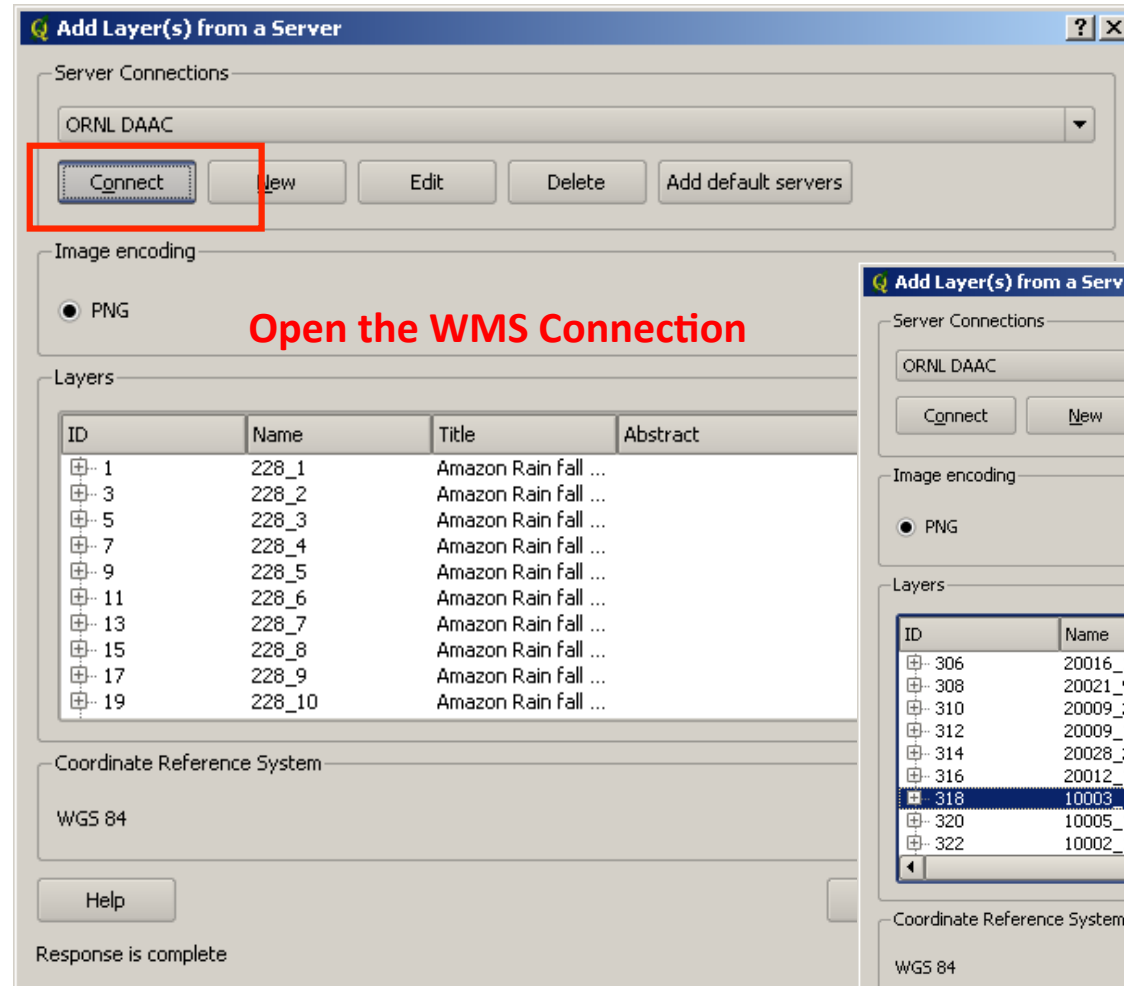
Accessing ORNL DAAC Web Map service (WMS) in Quantum GIS : Step 1/3

ORNL DAAC WMS GetCapabilities URL :

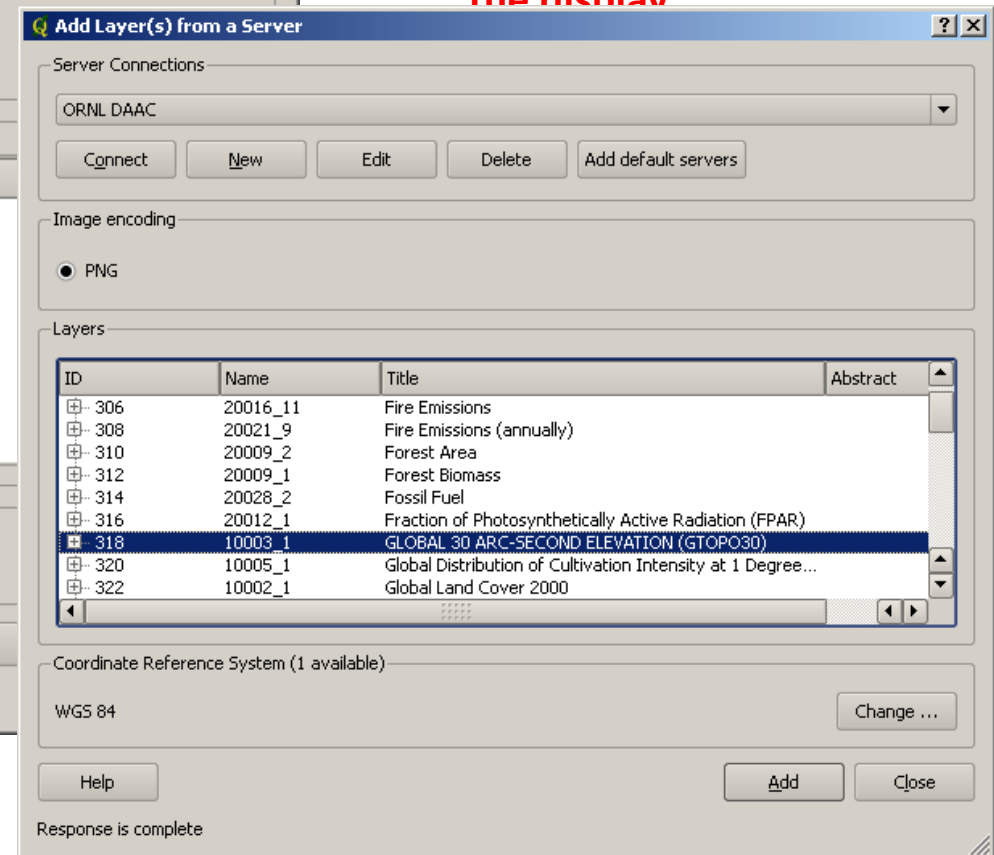
<http://webmap.ornl.gov/ogcbroker/wms?service=WMS&version=1.1.1&request=GetCapabilities>



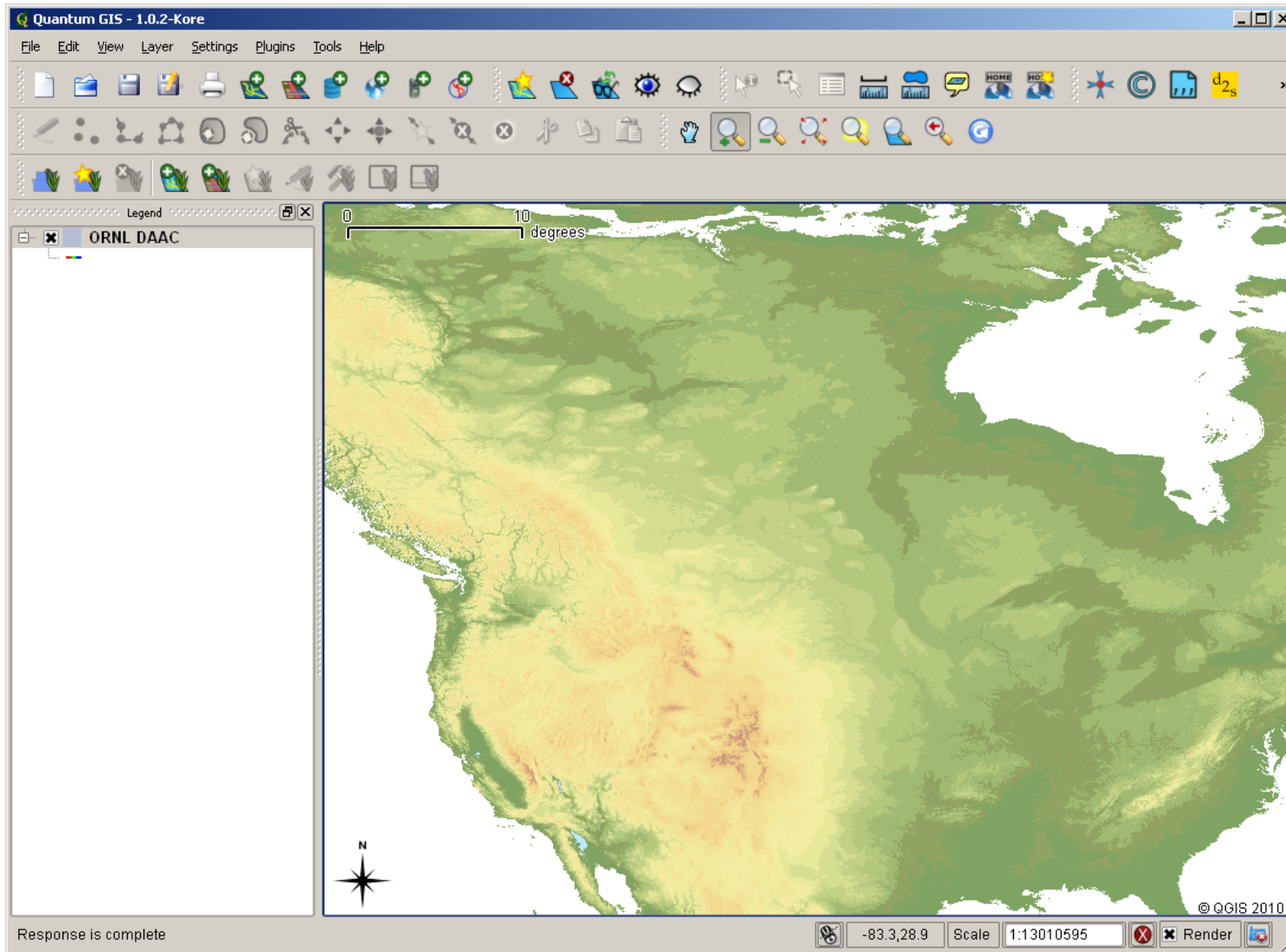
Accessing ORNL DAAC Web Map service (WMS) in Quantum GIS : Step 2/3



Select a data layer to add to the display



Accessing ORNL DAAC Web Map service (WMS) in Quantum GIS : Step 3/3



Visualize Data Layer